

# Mundi Partners presentation

Atos Copernicus DIAS  
Data and Information Access Services

# Atos

<https://mundiwebservices.com>

[mundiwebservices.com](https://mundiwebservices.com)

© Copyright 2018 Mundi Web Services





# Mundi, the Atos DIAS

Combining simple access to **Copernicus, other satellite and third party data.**

Using cloud and big data technologies,

Mundi accelerates the **time to market** for innovative services based on earth observation data.

Mundi allows to deliver a service that is distinctive, reliable, and immediately monetizable.

**Atos**

 **mundi**  
WEB SERVICES



## Use Earth observation data: a technological & human challenge

- Combine satellite data with in-situ or enterprise data
- Understand, select, download, conserve and process each data
- Harness a range of scientific and technical skills and manpower
- Load and store petabytes of data
- Deploy high performance processing capabilities

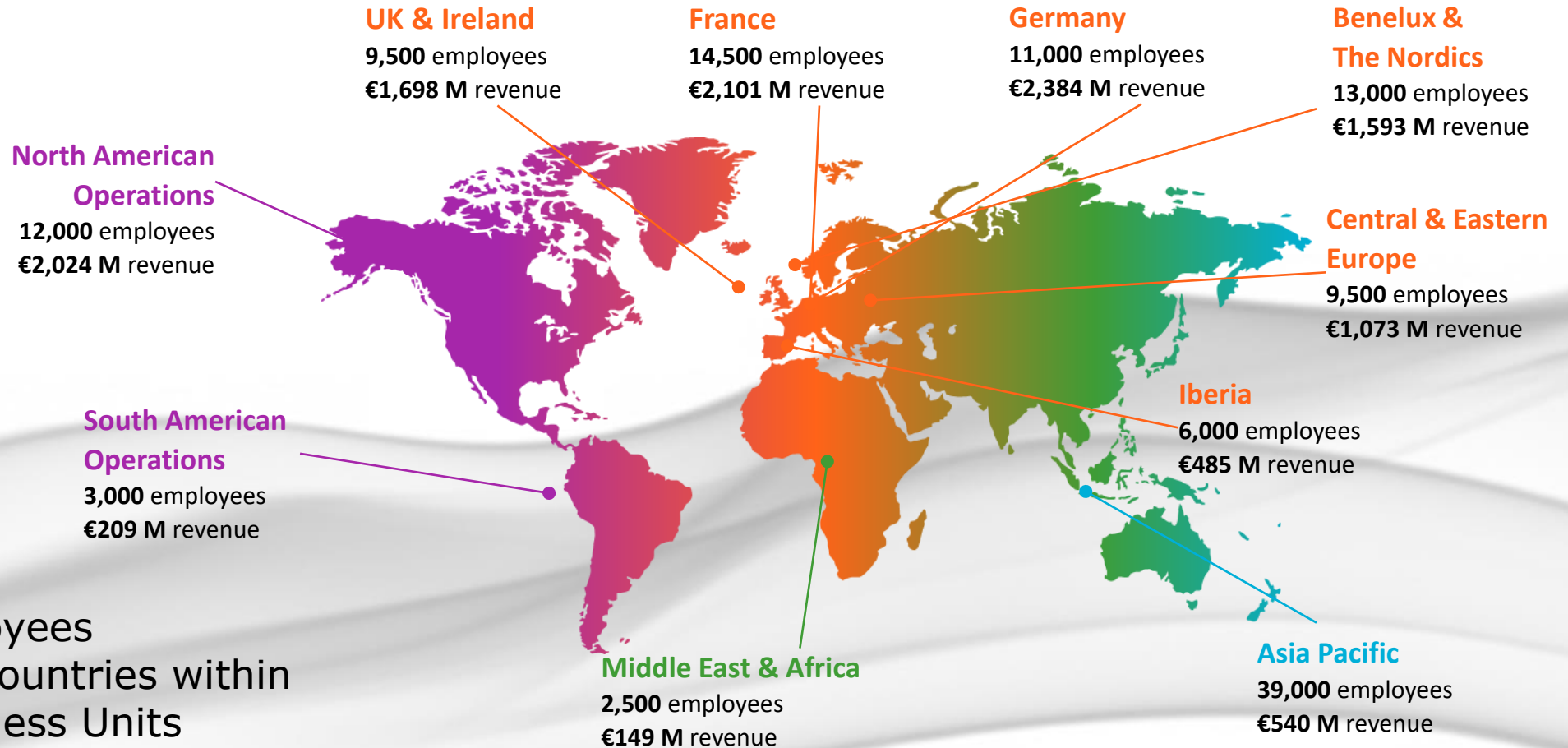


Photo: ESA



# Atos in the world

# Our international presence



**120,000** employees  
working in **73** countries within  
**10** Global Business Units

Figures include Worldline in each geographies

2

Mundi

The Atos EO dissemination Platform



# Key elements

Secured  
Cloud Platform



Enhanced Data  
Collection



Tools  
Collection



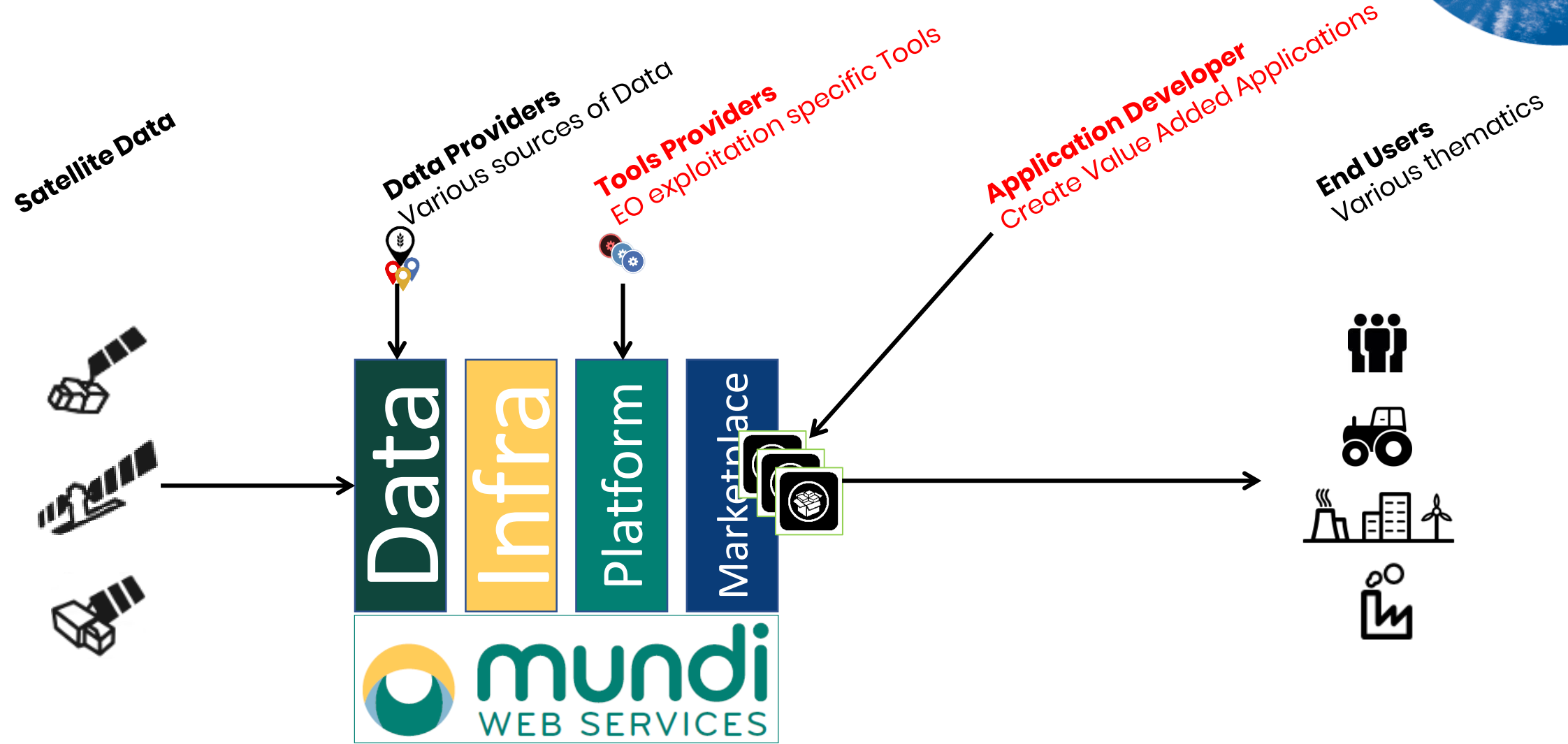
Customized  
Support

<https://mundiwebservices.com/marketplace>

# AtoS



# Mundi Ecosystem

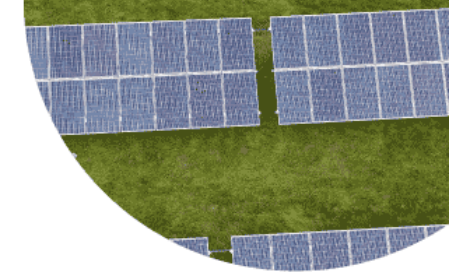


Atos





# Data Collection



**SENTINEL 1 – SLC – GRD Altimetry**

**SENTINEL 2 – L1C – L2A**  
Visible – VNIR – SWIR  
Land Monitoring

**SENTINEL 3 – L1 – L2**  
Ocean Monitoring

**SENTINEL 5P**  
Troposphere Monitoring

**Free**  
Over 4 years monitoring  
Weekly frequency

**EMERGENCY**  
**LAND SECURITY**  
**CLIMATE**  
**ATMOSPHERE**  
**MARINE**

ESA Thematic Data



	<i>Free</i> <i>(Open data)</i>	<i>Extra cost</i> <i>(from 3P data provider)</i>
<b>Earth Obs.</b>	<b>LANDSAT 7 – 8</b>	<b>Depending your needs</b> ...
	<b>IRS P5</b>	
	<b>ProbaV</b>	
	<b>ESA Datawarehouse</b>	
<b>Other data</b>	<b>GIS Maps</b> (OpenStreetMaps)	<b>Depending your needs</b> ...
	<b>Geologic maps</b>	
	...	





# Tools Collection



Free of charge

## Mundi Services

- Discovery Service
- View and download Service
- Basic Data Download
- Data and services Catalog
- Geometrical control service
- Products Exploration tool
- Notebook
- Knowledge base / FAQ
- Level 1 HelpDesk

Pay per use (IT Catalog)

## IT pre loaded tools

- Elastic Cloud Server
- Storage Services
- Elastic Load balancer
- Specific Database Services
- Distributed Message Service
- Map Reduce Service

Subscription package

## Open Source Qualified Tools

- Orfeo Toll Box (OTB)
- ESA SNAP
- GDAL
- MapServer / GeoServer
- PostGIS
- QGIS

Subscription by tool

## Advanced Tools

- Advanced data download
- Spacemetric "Datacube"
- Spacemetric Auto Mosaicking/ Orthorectification
- Dynamic Kubernetes environment





# Atos Business Accelerator

- Use the Mundi Marketplace as a showroom space to expose your app or your demo
- Allow to 3PU or 3PP to increase their business
- Atos and Mundi partners build a specific communication campaign relative to the App thematic (problematic covered, solution, references, price, regional availability)
- Atos animates his commercial network to present actively partner thematic apps to our customers in account
- Atos do the best to integrate partner apps or services in tenders

*Partner Agreement*





# Atos Extended Support

## Migration support

We manage the Mundi on boarding for 3PU.  
Technical support & activities for integration  
Products migration  
Operational commitments

*price/day  
or integrated in  
Partner Agreement*

## Application build support

We support 3PU in the most efficient and cost effective way to build, bug fix, change and maintain their application. Its expertise is unique in supporting the full application lifecycle: from application development, transformation to ongoing management

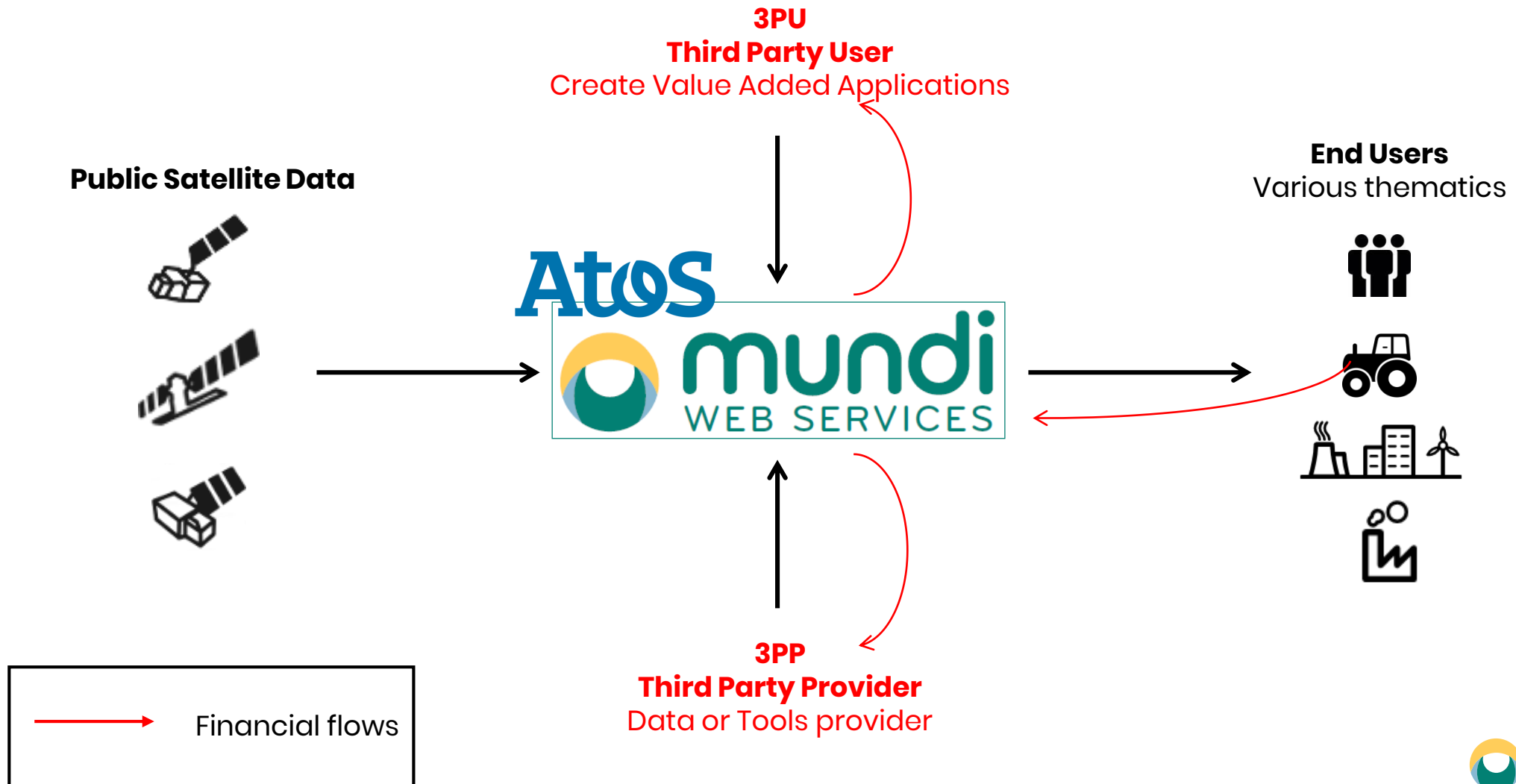
*price/day  
or integrated in  
Partner Agreement*

## Marketing & consulting support

Help 3PU to find market and clients.  
Helping 3PU, to better targeting clients and increase app/company value of proposal. Access to Atos and Mundi Partners go to market capabilities

*price/day  
or integrated in  
Partner Agreement*

# Atos Business Model



# 3

Atos Market Strategy  
Deal proposition

---

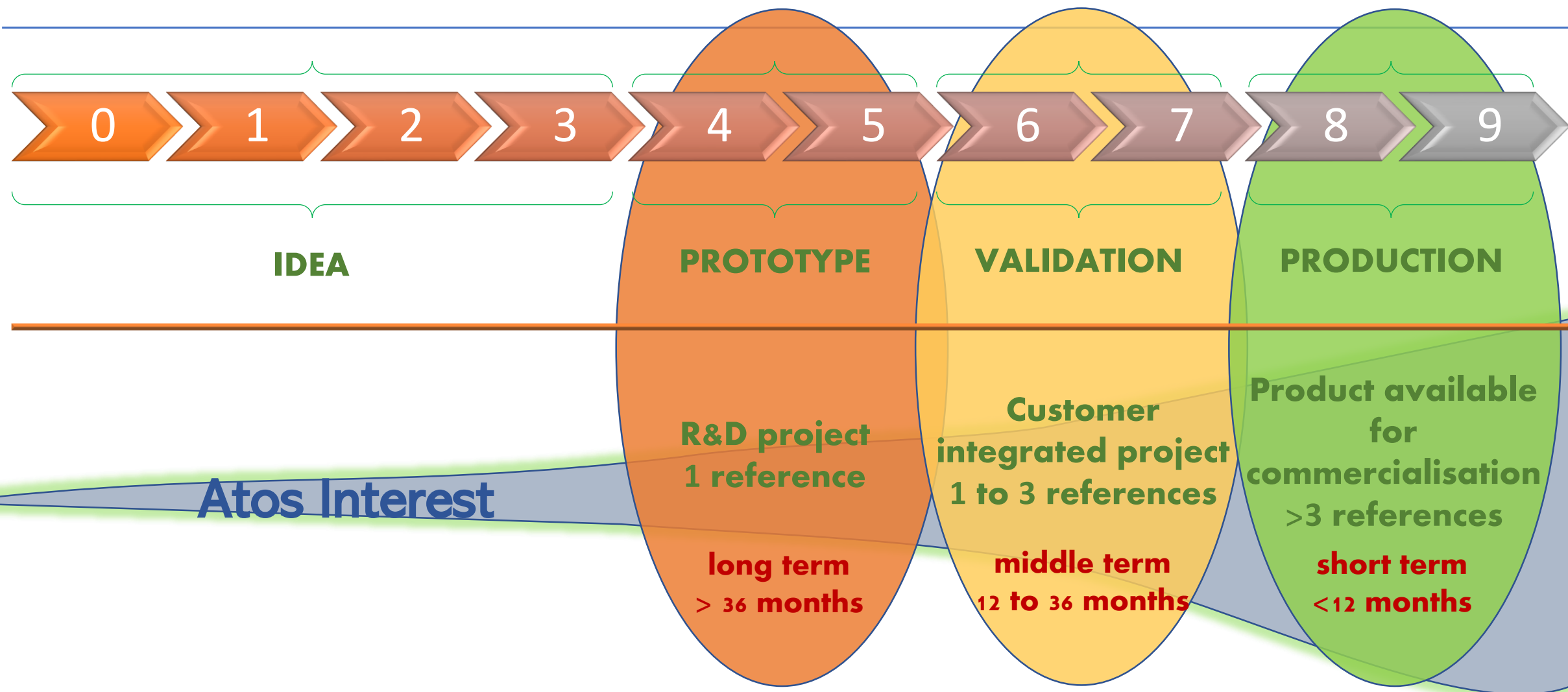


# Atos for Space Downstream Applications

Agriculture	Insurance	Homeland	Environment
<b>Crop Mgt</b> <ul style="list-style-type: none"><li>. Irrigation</li><li>. Yield estimation</li><li>. Disease detection</li></ul> <b>Irrigation</b> <b>Farm Work Scheduler</b>	<b>Natural Disasters</b> <ul style="list-style-type: none"><li>. Floods</li><li>. Hailstorm</li><li>. Forest fires</li><li>. Tsunamis</li><li>. Volcanism</li></ul>	<b>Land Monitoring</b> <ul style="list-style-type: none"><li>. Land use monitoring</li><li>. Revegetation</li><li>. Infrastructure monitoring</li></ul>	<b>Atmospheric Monitoring</b> <ul style="list-style-type: none"><li>. NO<sub>2</sub>, CO<sub>2</sub>, O<sub>3</sub></li><li>. Pollens</li></ul> <b>Pipeline Monitoring</b> <b>Water Pollution</b>

- Atos global sales organization focused on big customers
- Concrete problematic adressed
- Turnkey Solutions
- References

# Define 3PUs app position on TRL levels





# Thank you

Mundi Web Service

<https://mundiwebsiteservices.com>

Twitter: @mundiwebservice

Contact : laurent.clergue@atos.net

# Atos

[mundiwebsiteservices.com](https://mundiwebsiteservices.com)

